

GETTING STARTED



Interwrite™ Board

for Windows and the Mac



We at Interwrite Learning™ are proud of our family of Interwrite products. We strive to continue to bring you the best the technology has to offer. We urge you to visit our Web site, where we will post the latest information regarding any updates and changes we have made that would impact the instructions in this *Getting Started* document.

www.InterwriteLearning.com

Click on any of the Interwrite Learning products to access product information, software downloads, documentation, and training information.



Please recycle



Interwrite Board – Overview

Installation Overview	7
1. Unpack Your Interwrite Board	7
2. Mount Your Interwrite Board	8
3. Install the Interwrite Workspace Software	9
4. Connect Your Interwrite Board	9
5. Connect the Video Projector	9
6. Prepare the Electronic Interwrite Pens and Install the Pen Charging Station	9
7. Calibrate Your Interwrite Board	9

Mount Your Interwrite Board

Mounting the Interwrite Board on the Wall	10
Attaching Floor Stand Mounting Brackets to the Interwrite Board	12
Mounting the Interwrite Board on the Floor Stand	13

Install the Interwrite Workspace Software

Installing the Interwrite Workspace Software on Windows	14
Installing the Interwrite Workspace Software on the Mac	15

Connect Your Interwrite Board

Cable Installation	16
Bluetooth™ Wireless Installation	18
Install the BTCOM2 Module on the Interwrite Board	19
Install the Bluetooth Module on the Computer	20
Install the USB Adapter	21
Connect the Interwrite Devices	22
Connecting a Wireless Device on Windows	22
Connecting a Wireless Device on the Mac	24

Connect the Video Projector

Connect the Video Projector	26
-----------------------------	----



Calibrate Your Interwrite Board

Calibrating the Interwrite Board 29

Getting Started with Interwrite Workspace

Beginning an Interwrite Workspace Session 31

The Interwrite Workspace Toolbar 32

Using the Pen Tool 33

Presentation Files 34

Distributing Presentation Files 35

Additional Interwrite Learning Resources 35

What is PRS? 35

Whiteboard Mode 36

Interwrite Accessories

BTCOM2 Communications Kit 37

The Interwrite™ Pad 37

The Rechargeable Interactive Pen and
Pen Charging Station 38

Using the Rechargeable Interactive Pen 39

Assembling the Interwrite Marker Pen 40

The Interwrite Interactive Pen 41

Installing the Mounting Clips on the
Interwrite Board and Wall 42

Attaching the Pen Tray to the Interwrite Board 43

The Interwrite Board Floor Stand 44

The Floor Stand Accessory Shelf 44

Assembling the Floor Stand 44

Assembling the Legs 45

Attaching the Crossbars to the Leg Assemblies 45

Regulatory Statements and Warranty

Regulatory Statements 46

International Interwrite Board Warnings 52

Warranty 54



Interwrite™ Board

Overview

The Interwrite™ Board is central to the Interactive Classroom. These durable electronic whiteboards feature Interwrite Learning's patented electromagnetic technology. Used alone, or in combination with Interwrite™ Pads, your Interwrite Board will provide the most effective means of facilitating and stimulating a successful interactive, collaborative environment, whether in the classroom, in the meeting room, or reaching out to participants around the world.

You will see in this *Getting Started* guide how versatile your Interwrite Board installation can be, accommodating every type of presentation environment. Every step of the setup and installation process for each possible configuration is described in these pages. In addition, a variety of accessories are described. Some of the Interwrite Board accessories, such as an electronic pen, are required, others are optional. In any case, we will show how they can be used to uniquely tailor your interactive environment to your requirements.

Once set up, your Interwrite Board must be able to communicate with your computer, either by means of a cable connection (serial or USB), or wirelessly, using the *Bluetooth™* Comm Kit. The Interwrite Workspace software manages the communication link with your Interwrite Board, controls its operation, and provides a robust set of tools to achieve the interactive experience.

You will use Interwrite Workspace software tools to establish communication with your Interwrite Board and to calibrate it. Calibration ensures that the cursor on the projected image is properly aligned with the tip of the electronic Interwrite Pen on the whiteboard's surface.

The Interwrite software lets you operate your Interwrite Board in one of two primary operational modes: **Whiteboard Mode** and **Interactive Mode**.

Whiteboard Mode makes it possible for you to easily capture the notes, drawings and calculations on your Interwrite Board for print and/or electronic distribution. The only equipment you need to run the Whiteboard Mode is your Interwrite Board, one or more electronic Interwrite Marker Pens, and your computer.



Interactive Mode allows you to take advantage of the full power and features of the Interwrite system. Running Interactive Mode requires your Interwrite Board, an Interactive Pen or one or more Marker Pens, a computer, and a video presentation projector. The video projector is connected to the computer so it can project the image of the computer desktop onto the Interwrite Board's surface. Once connected, your Interwrite Board communicates as an input device to the computer.



Installation Overview

This section describes what you will be doing and the order in which you will be doing it, to facilitate the installation of your Interwrite Board and its preparation for use.

1. Unpack Your Interwrite Board

Open the shipping box and remove the Accessory Box. Leave the Interwrite Board in the box until you are ready to mount it.

In the *Accessories* section of this guide, you will see that a variety of Interwrite Board accessories are available to help you create the interactive environment that best suits your requirements. Following is a basic list of the Interwrite accessories likely to be included with your Interwrite Board:

Serial Cable	Power Supply	Wall Mounting Bracket
USB Cable	Adapters	Pen Tray
Cable Guides	Mounting Clips	Interwrite Learning™ CD
Power Supply	Interwrite Pens	This <i>Interwrite™ Board Getting Started Guide</i>

If you are going to connect your Interwrite Board using a **cable**, only one cable, *either* Serial *or* USB, can be used. If you are going wireless, neither cable should be used.

If your **Power Supply** shipped with a set of adapters, the instructions for fitting the correct adapter on the plug are described on page 17. If you are connecting your Interwrite Board using a USB cable, the Power Supply is not needed. However, the Power Supply is required if you are using a serial connection, attaching the BTCOM2 Module to the board for wireless communication, or connecting the Interactive Pen Charging Station to the board's controller.

The **Cable Guides** are used to manage and guide dangling cables.

The optional **Mounting Clips** will be used only when you are mounting your Interwrite Board on the wall. Their installation is described in the *Accessories* section on page 42.

The **Pen Tray** is an optional accessory. If you are planning to mount your Interwrite Board on the wall and you purchased a Pen Tray, it should be installed on your Interwrite Board *before* it is mounted on the wall. Instructions for attaching the Pen Tray can be found on page 43.

Your Interwrite Board ships with one **Wall Mounting Bracket**. The board's frame is designed to hang from the Mounting Bracket installed on the wall.

You will need an electronic **Interwrite Pen** to use with your Interwrite Board. You can choose from among the Interactive Pen, the Marker Pen and the rechargeable Interactive Pen, described beginning on page 39.

The optional **Interwrite Interactive Pen Charging Station** (page 38) is designed to attach easily to the Interwrite Board frame. Nevertheless, it can be mounted instead on the wall, although it should be close enough to the Interwrite Board's controller so it can be plugged into the Power Connector on the top of the controller housing. (The Pen Charging Station can be plugged directly into a wall socket or power strip. The power cable with a standard power plug for such an installation is sold separately.) If you are mounting your Interwrite Board on the wall, you should attach the Pen Charging Station to the Interwrite Board *before* you mount it.

The **Interwrite Learning CD** contains the Interwrite Workspace software for both a Windows installation and a Mac installation. Interwrite Workspace must be installed on your computer before you can complete the installation of your Interwrite Board.

2. Mount Your Interwrite Board

Will this be a wall mount, or a floor stand mount? If you are mounting your Interwrite Board on a floor stand, you need to assemble the floor stand first. The instructions for assembling your floor stand are included in the floor stand shipping box. In addition, instructions for assembling your floor stand can be found on page 44 in this guide.

The type of mount will also determine which Mounting Brackets, if any, you will attach to the back of the Interwrite Board. For a floor stand mount, two Mounting Brackets are attached to the back of the Interwrite Board with supplied Phillips screws. These Mounting Brackets ship with the floor stand.

For a wall mount, the Interwrite Board requires only one Mounting Bracket, which is attached to the wall. The frame of the Interwrite Board is designed to overlap the Mounting Bracket on the wall. The hardware for attaching the Mounting Bracket to the wall is not included. You will supply the hardware that is appropriate to the type of wall on which the Interwrite Board is being mounted.

WALL MOUNT

If you purchased a Pen Tray and/or an Interactive Pen Charging Station, install them before you hang the Interwrite Board on the Wall Mounting Bracket. If you plan to use the optional Mounting Clips (page 42) to stabilize your wall-mounted board, install them after you have mounted your Interwrite Board on the wall.



FLOOR STAND MOUNT

After you assemble the floor stand, attach the two Mounting Brackets to the back of the Interwrite Board using the Phillips screws provided. It requires two people, one at each end of the Interwrite Board, to mount it on the floor stand. It is attached using the Knob Screws provided. You can attach the Pen Tray and/or Pen Charging Station after the Interwrite Board is mounted on the floor stand.

3. Install the Interwrite Workspace Software

4. Connect Your Interwrite Board

Your Interwrite Board must be able to communicate with the Interwrite Workspace software on your computer. This communication link is established either by means of a physical cable (USB or serial) connection, or wirelessly between two Bluetooth communication modules—one connected to the Interwrite Board and one connected to the computer. The computer will automatically find an Interwrite Board that is connected to it by a cable, but the wireless Bluetooth Modules must be “connected” by the Interwrite Device Manager, one of the Interwrite Workspace software applications.

5. Connect the Video Projector

In order to run Interwrite Workspace in Interactive Mode, a video projector must be connected to the computer.

6. Prepare the Electronic Interwrite Pens and Install the Pen Charging Station

The Interwrite Marker Pen must be assembled and a battery installed before use. A battery is installed in the Interactive Pen. The optional Pen Charging Station is installed on the Interwrite Board and the rechargeable Interactive Pens must be charged before they can be used. Instructions for attaching the Pen Charging Station to the Interwrite Board are on page 38. Instructions for assembling the Marker Pen and the Interactive Pen are on pages 40 and 41.

7. Calibrate Your Interwrite Board

Your Interwrite Board needs to be calibrated to ensure that the tip of the electronic Interwrite Pen is aligned with the cursor on the projected image. Any time the Interwrite Board or video projector is moved, the Interwrite Board must be re-calibrated.

Mounting the Interwrite Board on the Wall

The Interwrite Board Wall Mounting Bracket, found in the Accessory Box, is mounted on the wall. The Interwrite Board frame overlaps the Mounting Bracket's lip.

Note

The hardware for attaching the Mounting Bracket to the wall is not included. The hole spacing on the bracket matches 16" and 24" wall stud spacing.

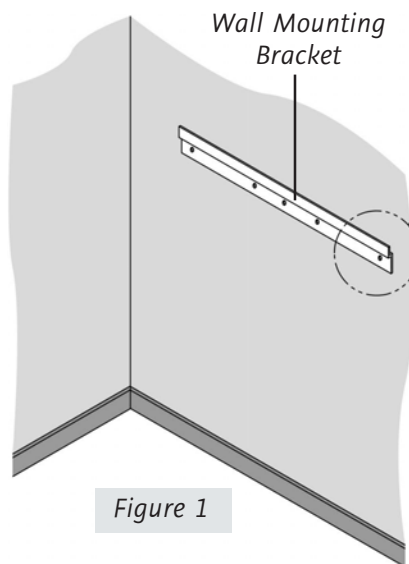


Figure 1

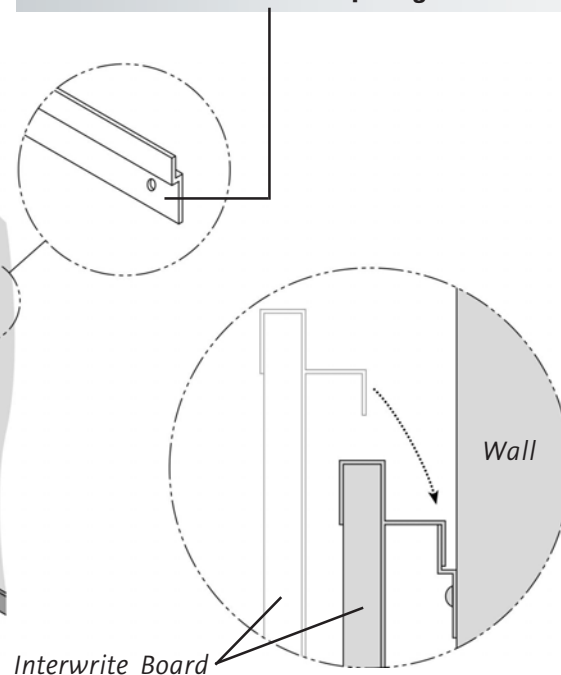


Figure 2

Hang the Interwrite Board frame on the Wall Mounting Bracket, as shown above.



Two people should mount the Interwrite Board on the wall to avoid injury, or damage to the Interwrite Board.



If you are planning to use the Mounting Clips, described on page 42, in conjunction with the wall mount, install them on the back of the board and attach them to the wall *after* you hang the Interwrite Board.

- 1** Attach the Wall Mounting Bracket to the wall (*Figure 1*), using hardware appropriate for the wall structure. (This hardware is not included.)
- 2** Hang the Interwrite Board by interlocking the Wall Mounting Bracket with the rear edge of the top part of the Interwrite Board frame, shown in *Figure 2*.

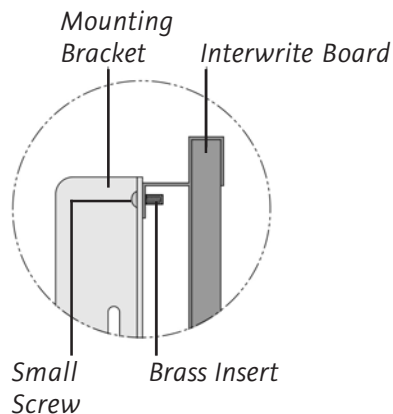
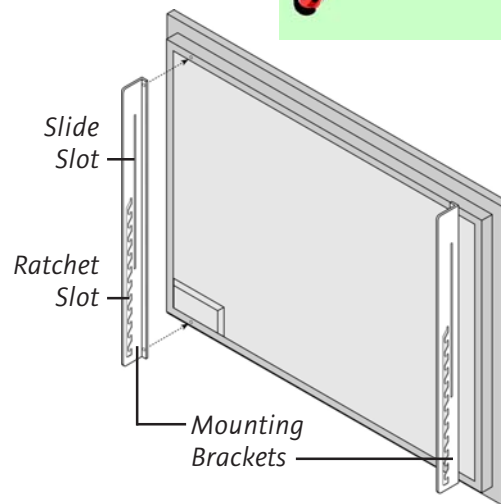
Attaching the Floor Stand Mounting Brackets to the Interwrite Board

After you have assembled the floor stand (instructions on page 44), you will attach the Mounting Brackets that came with the floor stand to the back of the Interwrite Board.

Tools Required:



- 1 Attach the **Mounting Brackets** to the back of the Interwrite Board frame. The Slide Slot is oriented toward the top of the Interwrite Board, the Ratchet Slots are toward the bottom, and the short side of the bracket points inward toward the center of the board.



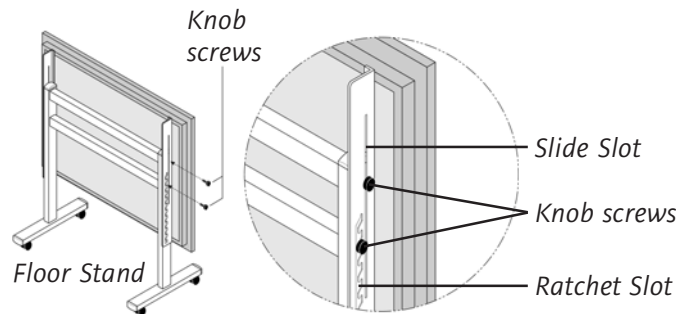
- 2 Line up the holes in the bracket with the **Brass Inserts** on the frame. Use the two **small screws** provided to attach the bracket.

Mounting the Interwrite Board on the Floor Stand

The Interwrite Board is attached to the floor stand with the provided **Knob screws**—two on each side of the board.



Two people should mount the Interwrite Board on the floor stand to avoid injury, or damage to the Interwrite Board.



- 3 With one person at each end of the Interwrite Board, position the Mounting Brackets on either side of the Floor Stand Legs. Thread the top **Knob screw** through the **Slide Slot** in the Mounting Bracket and into the hole closest to the front edge of the Floor Stand. Screw the second Knob screw through one of the **Ratchet Slots** in the Mounting Bracket and into the screw hole positioned in the middle of the second, lower set of four Crossbar screws.

The position of the Interwrite Board on the floor stand can be adjusted by standing in front of the Interwrite Board, grasping the bottom of the board with both hands, and sliding it up or down, coming to rest on one of the Ratchet Slots in the Mounting Brackets.



One person can adjust the position of the Interwrite Board up or down, but be sure to stabilize the floor stand before you attempt to reposition the board. Lock down the thumb tabs on the Casters, or push the floor stand against a wall to prevent it from rolling, or put one of your feet on the Floor Stand Foot to hold it in place as you adjust the Interwrite Board's position.

Position the floor stand on a level surface to avoid tipping.

Lower the Interwrite Board to the lowest position on the floor stand before moving the stand.

Do not hang objects on the Interwrite Board.


Installing the Interwrite Workspace Software on Windows

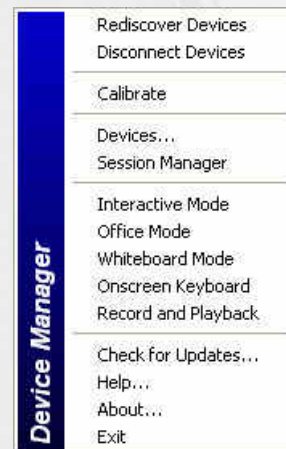
The Interwrite Workspace software must be installed on Windows by a user with *Administrator* privileges. Interwrite Workspace is compatible with Windows 2000, XP, and Vista.

Note


If you are using Windows 98/Me/NT, you must use Interwrite Workspace version 5.0. For more information, contact Technical Support to order an installation CD.

- 1 Log in as *Administrator*. Insert the Interwrite Learning CD into the CD drive on your PC. The installer will autoload. If it doesn't, click on the **Start** button on the Windows Task Bar and select *Run* from the menu. Type `X:\setup.exe` (*X* represents the CD drive letter).
- 2 Select the *Install Interwrite Workspace Software* menu option.
- 3 Follow the onscreen instructions for the software installation. You will know Interwrite Workspace has installed successfully by the appearance of the Interwrite Workspace icon in the System Tray on the Windows Task Bar. If the icon does not appear, restart your computer.

The appearance of the Interwrite Workspace icon  on the Task Bar indicates that the Interwrite **Device Manager** is now running on your PC. Click on the Workspace icon to display the options on the Device Manager Menu shown here. Device Manager, in addition to managing the Interwrite hardware devices, provides direct access to the three operational modes of the Interwrite Workspace software.



Note

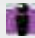
Click the Interwrite Workspace icon  in the System Tray of the Windows Task Bar to display the Device Manager Menu. Select the *Check for Updates* option. If a new version of Workspace is available, download it now. You should periodically check for updates.

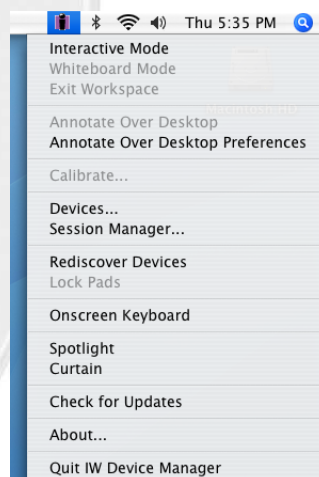
Installing the Interwrite Workspace Software on the Mac

The Interwrite Workspace software must be installed on the Mac by a user with *Admin* privileges. Interwrite Workspace is compatible with Mac OS X version 10.4 or higher.


- 1 Insert the Interwrite Learning CD into the CD-ROM drive on your Mac. An Interwrite Workspace CD icon will appear on your desktop.
- 2 Double-click on the Interwrite icon on the desktop to display the CD's contents. Double-click on the **Install Interwrite** icon.
- 3 Follow the onscreen instructions for the software installation.

January 2007
11-00123-01 Rev A
©2007 Interwrite Learning™

The appearance of the Interwrite Workspace icon  on the Menubar indicates that the **Device Manager** is now running on your Mac. It will load and run in the background every time you start up your Mac. Click on the Interwrite Workspace icon to display the options on the Device Manager Menu, shown here. Device Manager, in addition to managing the Interwrite hardware devices, provides direct access to the two operational modes of Interwrite Workspace on the Mac.



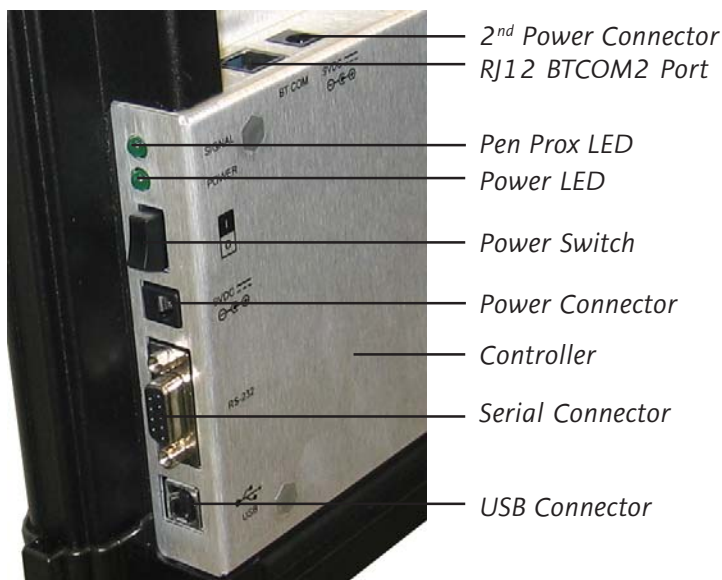
Note

Click the Interwrite Workspace icon  on the Menubar to display the Device Manager Menu. Select the **Check for Updates** option. If a new version of Interwrite Workspace is available, download it now. You should periodically check for updates.

Connect Your Interwrite Board: Cable Installation

The Interwrite Board is *connected* to the computer either via a cable, or wirelessly. If you are not using the Bluetooth wireless communication system described next, you can connect your Interwrite Board to the computer using either the supplied USB cable, or the serial cable. **Do not use both cables.** Choose one or the other to connect the PC and the Interwrite Board. The Mac can be connected to the Interwrite Board only with the USB cable.

The connectors and switches on the Interwrite Board Controller are shown in the graphic below. Please note that the Controller on your Interwrite Board has two power connectors, one on the top of the Controller and one on the side. Plug the Power Supply into the Power Connector on the side of the Controller. The Power Supply is not necessary if you are using a USB connection. However, if you are using a serial connection, attaching a BTCOM2 Module for wireless communication, or attaching the optional Pen Charging Station, you must connect the Power Supply. The Pen Charging Station, if you have one, is plugged into the Power Connector on the top of the Controller.




Note

Use either a Serial or a USB connection, never both.

There is only one Connector for USB. It is on the side of the Controller, as shown in the photo. The Connector located on the top of the Controller with the Power Connector is the RJ12 Connector for the BTCOM2 Module.



- 1 Shut down and turn off the computer.
- 2 Plug the square USB B connector end into the **USB Connector** on the Interwrite Board. *Or*, if you are using a PC and installing the serial cable, attach one end of the serial cable to the **Serial Connector** on the board's Controller.
- 3 Plug the flat USB A connector into an available USB port  on your computer or USB hub, or the serial cable into the serial port on the PC.
- 4 If necessary, attach the appropriate power plug adapter to the **Power Supply** plug, following these simple instructions:
 - a Remove and discard the **Shipping Collar Insert**.
 - b Note that each **plug adapter** has a **lip** that fits into the **recess** at the top of the **plug housing**. Locate the lip on the plug adapter you selected and tilt it into the recess.
 - c Snap the lower edge of the plug adapter into the **adapter well**. If necessary, slide the **thumb grip** away from the well as you push the plug down into the well.
- 5 Plug the cylindrical metal end of the power cord into the **Power Connector** on the side of the **Controller** and plug the plug into a power socket.*
- 6 Use the supplied cable guides to manage dangling cables. Remove the protective covering to expose the adhesive surface and stick them where you want to guide the cable and power cord.
- 7 Toggle the **Power Switch** to turn on the Interwrite Board. It will beep four times and the **Power LED** will light up to indicate the board has power.
- 8 Turn on the computer. It will automatically find the cable-connected Interwrite Board.
- 9 The **Pen Prox LED** will light up and stay lit as long as the electronic Interwrite Pen is *in prox of* or touching the Interwrite Board surface.



- 1 Plug Housing
- 2 Shipping Collar Insert
- 3 Recess
- 4 Adapter Well
- 5 Thumb Grip
- 6 Lip
- 7 Plug Adapter

* The Power Supply is not necessary if you are using a USB connection. However, if you are using a serial connection, attaching a BTCOM2 Module for wireless communication, or attaching the Pen Charging Station, you must connect the Power Supply.

Connect Your Interwrite Board: *Bluetooth™* Wireless Installation



The Interwrite Workspace system employs *Bluetooth™* wireless technology to establish wireless communication between the Interwrite Boards and Interwrite Pads and the computer. A **Bluetooth Module** must be installed on each component involved in wireless communication. The **Bluetooth BT-COM2 Module** is installed on the Interwrite Board. Interwrite Pads have the Bluetooth Module built in, so no installation is necessary.) The **Bluetooth USB Adapter** shown here is installed on the computer, if necessary.

If the computer has the Bluetooth Module built in, an external module is not needed. Most computers with a built-in Bluetooth Module will also have the Bluetooth driver software installed. Version 6.xx of the Interwrite software and version 7.0 of the new Interwrite Workspace software support the three most common Bluetooth stacks (driver software)—Toshiba, WIDCOM and Microsoft.

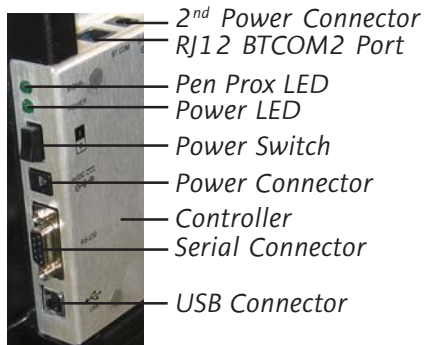
This section of the *Interwrite Board Getting Started* guide describes how to install the BT-COM2 Module on the Interwrite Board, install the Bluetooth software on the PC (it's already installed on the Mac), and connect the Bluetooth USB Adapter to the computer.

The Interwrite Board and Interwrite Pads in an Interwrite wireless system communicate with the computer through a single Bluetooth Module connected to the computer. Up to seven Bluetooth-enabled Interwrite Devices—Boards and Pads—can communicate with the Bluetooth Module connected to the computer. Only one Bluetooth Module, either built-in or external, can be connected to the computer at a time.

Install the BTCOM2 Module on the Interwrite Board

The BTCOM2 Module allows Interwrite Boards to operate wirelessly, eliminating the need for a serial or USB cable connection between your Interwrite Board and your computer. If either cable connection is in place, *disconnect* it before installing your BTCOM2 Module.

The BTCOM2 Module is installed on the Interwrite Board. It communicates with the external or built-in Bluetooth module on the computer.

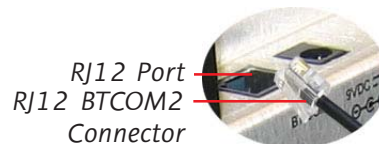


- 1 Toggle the **Power Switch** to power **off** the Interwrite Board.
- 2 Remove the serial or USB connector from the Interwrite Board, if it is still connected.



- 3 You will attach the BTCOM2 Module to the *back* of the Interwrite Board. Remove the paper covering the adhesive strip on the BTCOM2 Base. Position the Base on the back of the Interwrite Board at the top corner, on the controller housing side. Press firmly to affix the adhesive strip to the back of the Interwrite Board.
- 4 The BTCOM2 Module should be positioned with the Bluetooth logo facing forward. Route the RJ12 cable through the cable guide on the Base.
- 5 Plug the RJ12 Connector into the RJ12 Port (it looks like a phone jack) on the top side of the controller housing.
- 6 Attach the Power Supply, if you have not already done so. Power **on** your Interwrite Board. The Power LED will light up and you will hear four beeps that indicate the power is on, followed by one beep when the Interwrite Board has recognized the BTCOM2 Module.

Note The RJ12 Port and Power Connectors are on the top of the Controller. Do NOT attempt to plug a USB Connector into the RJ12 Port.



Connect Your Interwrite Board: Install the Bluetooth Module on the Computer

This section of the *Interwrite Pad Getting Started* guide describes how to

- ◆ connect the Bluetooth USB Adapter to the computer
- ◆ establish communication between the Bluetooth modules using the Interwrite Workspace software.

About Bluetooth and Workspace

The Interwrite Workspace system employs *Bluetooth*™ wireless technology to establish wireless communication between the Interwrite Boards and Interwrite Pads and the computer. A **Bluetooth Module** must be installed on each component involved in wireless communication. The **Bluetooth BTCOM2 Module** is installed on the Interwrite Board. The **Bluetooth USB Adapter** shown here is installed on the computer, if necessary. The Interwrite Pads have the Bluetooth Module built in, so no installation is necessary.

Bluetooth Requirements

If the computer has the Bluetooth Module built in, an external module is not needed. Most computers with a built-in Bluetooth Module will also have the Bluetooth driver software installed. Version 6.xx of the Interwrite software and version 7.0 of the new Interwrite Workspace software support the three most common Bluetooth stacks (driver software)—Toshiba, WIDCOM and Microsoft.




Windows XP with Service Pack 2, Windows Vista and Mac OS X version 10.4 or above have built-in Bluetooth support. If you are using Windows 98/2000Me/NT, contact Technical Support to order an installation Kit

Bluetooth Communications

The Interwrite Board and Interwrite Pads in an Interwrite wireless system communicate with the computer through a single Bluetooth Module connected to the computer. Up to seven Bluetooth-enabled Interwrite Devices—Boards and Pads—can communicate with the Bluetooth Module connected to the computer. Only one Bluetooth Module, either built-in or external, can be connected to the computer at a time.



Installing the USB Adapter

Plug the USB Adapter into one end of the USB cable and insert the other end into one of the USB ports  on your computer.

It cannot be plugged into a keyboard USB port on the Mac. The operating system will auto-detect and configure the new hardware device.



Keeping Track of the Bluetooth Adapter

The Velcro button in your Bluetooth Comm Kit is used to attach the USB Adapter to the side of your monitor, or to the lid of your laptop. Pull the button apart, remove the paper backing from both pieces, and stick one piece to the back of the USB Adapter and the other to the monitor or laptop lid. Use a USB extension cable to connect to the USB port.



Note

Do not install the USB Adapter behind metal enclosures, as this will limit performance. Metal serves as a shield and reduces the signal strength. Mount the Adapter so the top of the unit is positioned above the computer or monitor case. Use a USB cable extender when additional length is needed to mount the USB Adapter away from metal or other enclosures.

Moving the Bluetooth Adapter to Another Machine or USB Port

The Adapter-to-USB-port and Bluetooth software installation (Windows only) must be performed by a user with *Administrator* privileges. If the configuration is changed, that is, if the Adapter is moved to another USB port on the computer, or if a different USB Adapter is installed in the USB port on that computer, the process must be managed by the *Admin*.

Connect the Interwrite Devices

The Interwrite Workspace software component **Device Manager** is the driver for the *Interwrite Devices*—Interwrite Boards, Interwrite Pads and the Interwrite Panel. Device Manager is loaded when Interwrite Workspace is successfully installed on the computer. It automatically detects a cabled Interwrite Board or Interwrite Panel. However, the wireless Interwrite Devices need to be *discovered* – and, in the case of the Mac, to *select a Service* – before the communication connection is complete.


The following sections describe how to connect wireless Interwrite Devices, first on Windows, then on the Mac.

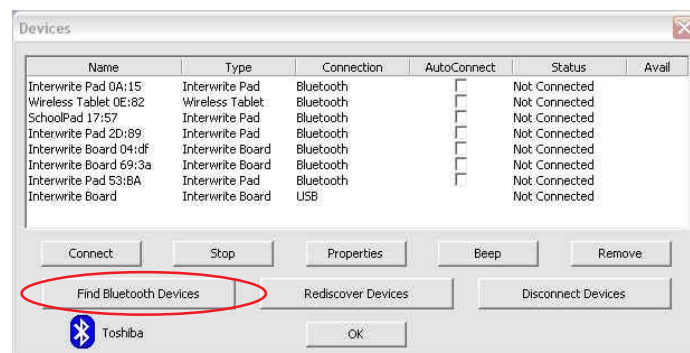
Once the Interwrite Devices are connected, a user with *Administrator* privileges will calibrate the Interwrite Board.

Connecting a Wireless Device on Windows


The last step in setting up wireless communications between your Bluetooth modules on the Interwrite Board and your PC is performed by **Device Manager**. Make sure the Interwrite Board is powered on.



- 1 Click on the Interwrite Workspace icon  in the System Tray on the Windows Task Bar to display the **Device Manager** menu.
- 2 Select the *Devices...* menu option.

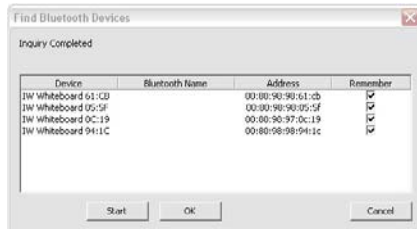


The **Devices** dialog box with the Bluetooth icon is displayed.

The icon is red  when the Bluetooth module is not connected to the PC.

- 3 Click on the **Find Bluetooth Devices** button.

A search inquiry for all Bluetooth Devices will begin automatically. When the inquiry is completed, all Devices discovered during the search will be listed in the **Find Bluetooth Devices** dialog.

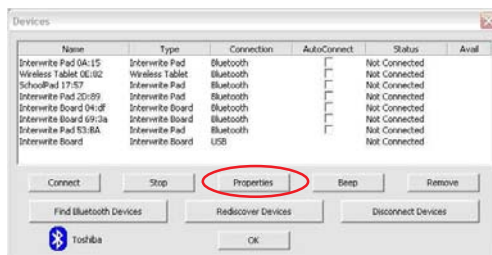


4 Click on the *Remember* checkbox next to each discovered Device you want to see listed in the **Devices** List Window.

5 Click **OK** to return to the **Devices** dialog.

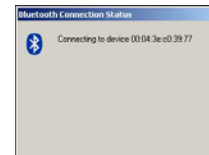
The Interwrite Device Address shown here is the *Radio ID* and can be found on the back of the Interwrite Device.

Each discovered device is identified in the Devices dialog by its *Name*, *Type*, *Connection*, *Status*, *Availability*, and whether *AutoConnect* is enabled. The



Properties feature allows you to give a connected Interwrite Device the Name shown in the Devices List Window (the Interwrite Pad is given an additional **Bluetooth Name**) and to program its **SoftKeys**.

AutoConnect is a property unique to Bluetooth-enabled Interwrite Devices. When AutoConnect is enabled, the computer will scan continuously for this and other active, AutoConnect-enabled Bluetooth Interwrite Devices and attempt to connect them. Scanning stops once a Device is detected and connected. Therefore, if you are connecting multiple Devices, make sure they are all powered on, so all of the Devices will be detected by the scan. The *Status* property will tell you whether the connection succeeded or failed. The *Availability* option indicates that a discovered Device is available for connection. The **Connect** button can be used to manually connect discovered devices.




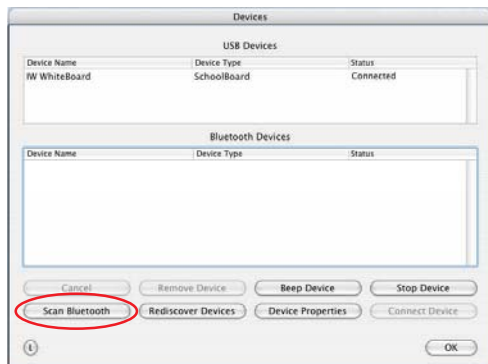
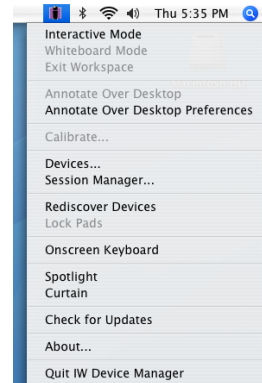
- 6 If you want the Interwrite Board to AutoConnect when it is powered on, click on the *AutoConnect* checkbox.
- 7 Select your Interwrite Board in the Devices List Window and click on the **Properties** button. Give the Interwrite Board a **Name**. This Name is stored in the Interwrite Workspace software on this computer and will identify the Interwrite Board when it is connected to this computer.

Once connected, your Interwrite Board is available as a system pointing device. Your computer mouse can still be used as a pointing device.

Connecting a Wireless Device on the Mac

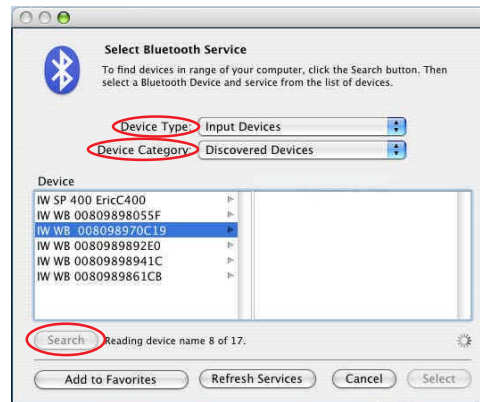
The last step in setting up wireless communications between your Bluetooth Interwrite Devices is performed by **Device Manager**. Make sure your Interwrite Board is powered on.

- 1 Click on the Interwrite Workspace icon  on the Mac Menubar to display the **Device Manager Menu**.
- 2 Select the *Devices...* menu option. The **Devices** dialog box is displayed.



- 3 Click on the **Scan Bluetooth** button. The **Select Bluetooth Service** dialog box is displayed.

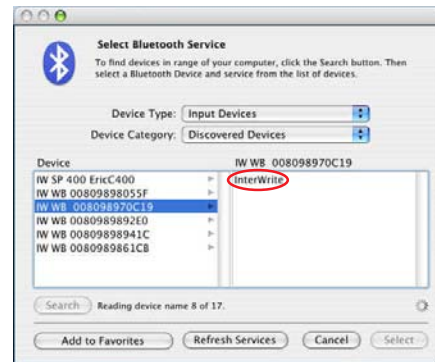
- 4 Make sure the **Device Type** is set to *Input Devices* and the **Device Category** is set to *Discovered Devices*.



- 5 Click on the **Search** button.

Every active Interwrite Board and Interwrite Pad running Bluetooth should be discovered and listed in the left column of the **Select Bluetooth Service** dialog box.

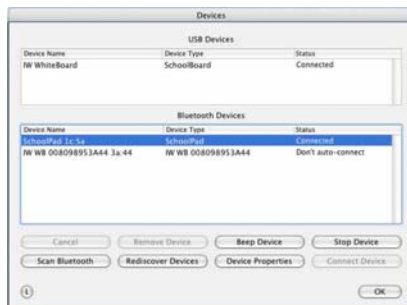
- 6 Click on the Device in the left column. A Service is displayed in the right column. Interwrite Bluetooth Devices—Interwrite Boards and Interwrite Pads—will use either the **ZV-AT** Service or **InterWrite** Service.
- 7 Click on the Service displayed in the right column. When you do, the Select button is activated.
- 8 Click on the **Select** button.



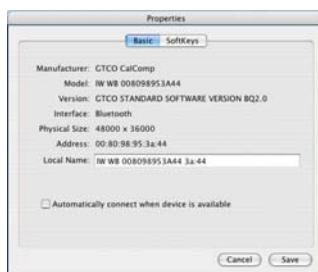
The Bluetooth dialog box goes away. The Interwrite Board beeps once when it is connected.

Note

If the Device doesn't connect, repeat the process—click on the Device, click on the Service, click on the Select button.



The Interwrite Board is now listed in the Bluetooth Devices section of the Devices dialog with **Status Connected**. By default, the Interwrite Board will automatically reconnect in the future. If you want to change that, select the Interwrite Board, click on the **Device Properties** button and clear the *Automatically connect when device is available* checkbox.



If you turn off your Interwrite Board and power it on during the current session, Device Manager will detect that the device has gone away and will change its status to *Disconnected*. Click on the **Connect Device** button to reconnect.

Tip: Give each Interwrite Device a *Local Name* so it will be distinguishable in the Bluetooth Devices list box.

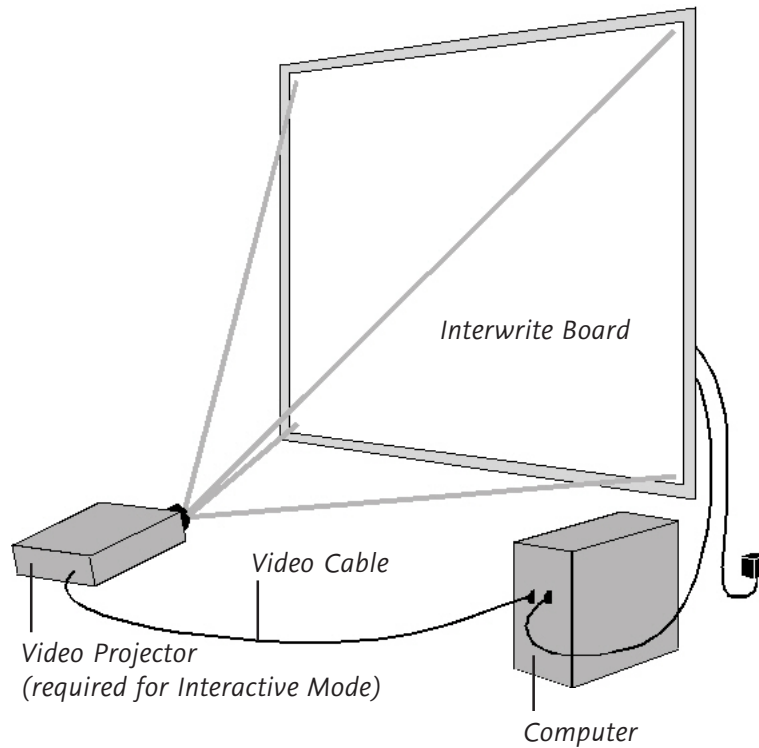


Connect the Video Projector

The Interwrite Board is connected to the computer, either wirelessly or wired, so it can communicate with the computer as an input device. The communication between the two is governed by the Interwrite Workspace software. Interwrite Workspace makes it possible to run this system in one of the Interwrite operational modes.

Whiteboard Mode is used when you want to capture notes, drawings and calculations made on the Interwrite Board using the electronic Interwrite Marker Pens. The only equipment you need to run Whiteboard Mode is an Interwrite Board, one or more Marker Pens, and the computer. The video projector is not used in Whiteboard Mode.

Interactive Mode and **Office Mode** (Windows only) require an Interwrite Board, one of the electronic Interwrite Pens (*Interactive Pen, Rechargeable Interactive Pen, or Marker Pen*), the computer, and a video presentation projector. The projector is connected to the computer so it can project the image of the computer desktop onto the Interwrite Board surface. The electronic Interwrite Pen can then be used to run applications (**Mouse Mode**) and to make annotations (**Annotation Mode**) on the projected desktop image on the Interwrite Board.

















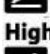






- 1 Turn off the computer and Interwrite Board.
- 2 Connect a video cable between the computer and the video projector.
- 3 Power on the Interwrite Board—it will beep four times to indicate it has power and then beep once to indicate it has recognized the BCOM2 Module, if one is connected for wireless communication.
- 4 Turn on the computer. The Interwrite Board will beep once when the connection between the Interwrite Board and the computer has been established, assuming that the **AutoConnect** setting is checked.
- 5 Turn on the video projector.

Calibrate Your Interwrite Board


Your Interwrite Board must be calibrated if you are going to be using the Interwrite system in Interactive Mode. After the hardware—computer, Interwrite Board, electronic Interwrite Pen, and video projector—has been set up and communication between the Interwrite Board and the computer has been established, calibration is the final step in the Getting Started process before you can actually use the Interwrite system. Calibration ensures that the electronic ink is properly aligned on the projected image with the Pen tip on the Interwrite Board's surface.

An Interwrite Board **Features Menu**, like the one shown here, appears on each side of the Interwrite Board. It offers a variety of Interwrite options, including the Calibration tool discussed here, that can be easily accessed no matter which side of the Interwrite Board you are positioned at.

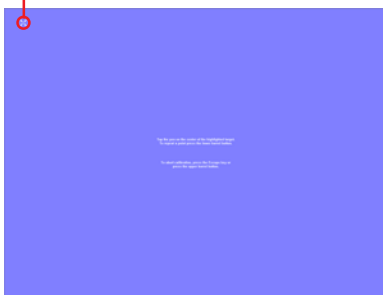
<i>Start Interwrite in Interactive Mode</i>		Interactive Mode
<i>Start Interwrite in Whiteboard Mode</i>		Whiteboard Mode
<i>Display Keyboard</i>		Keyboard
<i>Clear all annotations from current page (Click twice to clear)</i>		Clear (Press Twice)
<i>Save all pages (with annotations)</i>		Save
<i>Calibrate Interwrite Board</i>		Calibrate
<i>Silence (Lock) all Connected Pads</i>		Pad Lock
<i>Activate (Unlock) all Connected Pads</i>		Pad Unlock
<i>Program SoftKeys to:</i>		P1
<i>a) perform an Interwrite function,</i>		Programmable 1
<i>b) launch an application,</i>		P2
<i>c) run a macro, or</i>		Programmable 2
<i>d) open an Internet Web site</i>		P3
		Programmable 3
<i>Select Mouse Mode</i>		Mouse
<i>Select Pen Tool</i>		Pen
<i>Select Highlighter Tool</i>		Highlighter
<i>Select Eraser Tool</i>		Eraser
<i>Create Blank Page</i>		Blank Page
<i>Move to Previous Page</i>		Previous Page
<i>Move to Next Page</i>		Next Page



Calibrating the Interwrite Board

- 1 Aim the projector at the Interwrite Board's writing area, and size the projected desktop image to fit within the writing area. Make sure the image is properly projected on the Interwrite Board before continuing.
- 2 Using your electronic Interwrite Pen, click on the **Calibrate** icon  located on either of the Interwrite Board Menus.

Calibration Point



Calibration Screen

A blue calibration screen with a white **Calibration Point** in the upper left corner will display on the projected image on the Interwrite Board.

- 3 Using an electronic Interwrite Pen, click on each of the Calibration Points as they appear on the Interwrite Board. A bell tone will accompany each successful click. Click the left mouse button on the Pen (Windows only) to repeat a point. Click the right mouse button (Windows only), or type the **Esc** key on the computer (both Windows and Mac), to abort the calibration.



Note

If an error occurs during calibration, simply abort the operation and start over.

Recalibrate the Interwrite Board whenever the projector or the Interwrite Board has been moved.

The video projector should be utilized to project an image of the computer desktop on the Interwrite Board only when Interwrite Workspace is operating in *Interactive Mode*. The video projector should not be used when Interwrite Workspace is operating in *Whiteboard Mode*.

When calibration is complete, you are ready to begin using Interwrite Workspace to annotate captured screens and presentation pages on your Interwrite Board. The next section of this *Getting Started* guide gives you an overview of the Interwrite Workspace software.



Getting Started with Interwrite Workspace

The purpose of this document is to give you a feel for the Interwrite system by showing you how to select and use a tool in Interactive Mode. The Annotation Tools of Interactive Mode consist of freehand tools, text tools and drawing tools. Of the freehand tools, the Pen tool is the most frequently used Interwrite Workspace Tool. The following pages describe how to select and configure the Pen tool.

The Interwrite system is at the heart of a successful interactive collaboration, whether it is in a classroom of fourth graders studying world geography, or in a boardroom of corporate executives brainstorming a new product launch. All the tools you will need to stimulate inspiration, connection and participation can be found in the Interwrite Workspace software. Here's a quick look at the Workspace basics to get you started.

Workspace Modes

Interwrite Workspace is run in one of three operational modes, **Interactive Mode**, **Office Mode** (Windows only), or **Whiteboard Mode**.

Workspace Tools have been categorized as Annotation Tools, Editing Tools, Page Tools, Presentation Tools, Multimedia Tools, Navigation Tools, File Management Tools, and Setup Tools. The Interwrite Workspace Help file describes all these tools in detail and can be accessed from the Device Manager Menu.

Whiteboard

Whiteboard Mode, available only when using an Interwrite Board with Workspace, allows you to capture and preserve notes, drawings, calculations—whatever you write on the Interwrite Board with an Interwrite Marker Pen.

Office



Office Mode makes it possible to interact directly with the native files of the Microsoft Office suite of products, PowerPoint, Word and Excel.

Interactive

Interactive Mode allows you to open and run applications while in **Mouse Mode**, using the tip of your electronic Interwrite Pen on the Interwrite Panel screen to move the cursor. In **Annotation Mode**, you use the Interwrite Pen to select Interwrite Workspace Tools from the Toolbar.





















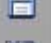
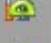



Begin an Interwrite Workspace Session

- 1 When you are ready to begin an Interwrite Workspace session, turn on your Interwrite Board. The Interwrite Board must be active and connected. You can verify this in *Session Manager*, or *Devices*, both **Device Manager Menu** options.
- 2 You can start Workspace in Interactive Mode in one of the following ways:
 - Use your Interactive Pen to click on the **Interactive Mode** icon  on either of the Interwrite Board's Features Menus.
 - Use your Interwrite Pen on the Interwrite Board's surface to guide the mouse cursor on the projected image to the Interwrite Workspace icon  on the Windows Task Bar or the Mac's Menubar. Click the icon to display the **Device Manager Menu**.
 - Select *Interactive Mode* from the menu.
 - Use your Interwrite Pen to double-click on the Interwrite Workspace icon on the desktop.
- 3 The Workspace Toolbar displays.



The Interwrite Workspace Toolbar

<i>Minimize Toolbar</i>		
<i>Workspace Menu</i>		
<i>Mouse Mode tool</i>		
<i>Selection tool</i>		
<i>Pen tool</i>		
<i>Highlighter tool</i>		
<i>Eraser tool</i>		
<i>Shape tool</i>		
<i>Line tool</i>		
<i>Text tool</i>		
<i>Undo Previous Action</i>		
<i>Clear</i>		
<i>Create Blank Page</i>		
<i>Create Grid Page</i>		
<i>Gallery tool</i>		
<i>Screen Capture tool</i>		
<i>Previous Page</i>		
<i>Next Page</i>		
<i>Page Sorter tool</i>		
<i>Save</i>		
<i>Toolbox</i>		
<i>PRS tool</i>		
<i>Exit</i>		

When you start up Interwrite Workspace in Interactive Mode, the Toolbar displays, along the right side of the projected desktop image, At that time, Workspace is in *Mouse Mode*.

Use your Interwrite Pen to select the Pen tool from the Toolbar. Select a capture option from the **Capture** dialog, click on the window, or click and drag to capture a portion of the screen.

Your capture is displayed in the *Annotation Window*. Or, you can start up Annotation Mode by selecting one of the Page Creation Tools.

The page type you select is displayed in the *Annotation Window* and the Pen tool is automatically selected.

Once the *Annotation Window* is open, you can begin writing or drawing on the page.



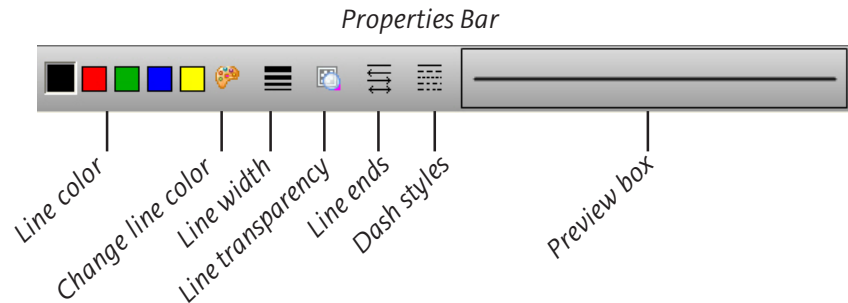
Using the Pen Tool

The attributes of the Pen tool can be changed by selecting different options from the Properties Bar at the bottom of the Annotation Window.

Select the Pen tool's Down Arrow to display its Tool Settings Menu.

Properties Bar

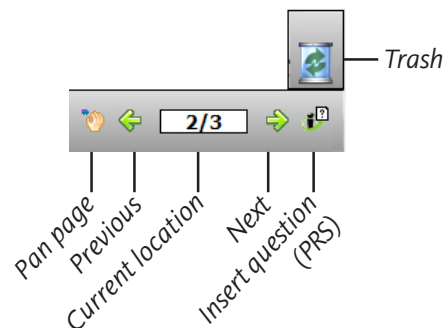
The Pen tool Properties Bar provides options to change line color, width, transparency, and line ends and line styles. Each attribute change is displayed in the Preview Box.



Change the Pen tool's line color and width to determine how it will affect the look of your annotations. The best way to familiarize yourself with all the different Interwrite Workspace tools and how they can be used to enhance your presentations is to experiment with them.

Page Functions

Workspace also provides the ability to move within pages within the window. Select the functions at the bottom of the screen to pan a page, move between pages, use the PRS tool (optional), or discard annotations.



Presentation Files

The presentation file is made up of your annotated pages. The Page Creation and Capture tools are used to create the pages in the presentation file and the Annotation Tools are used to create the annotations. The presentation file is automatically saved as a .GWB file.

As soon as Interwrite Workspace goes into Annotation Mode, an untitled presentation file is created. Unless you give the file a name, it is automatically saved using today's date as the filename. (Multiple files created today have 01, 02, 03, etc., appended to the date name.)

An existing presentation file can be opened, its pages can be sorted, annotations can be added to the existing pages, and new pages can be added to the file. Your presentation will determine how each presentation file evolves. For example, you can prepare a presentation file of blank maps ahead of time for a geography lesson. Or, you can capture and annotate each of the monthly earnings spreadsheets as you review the past fiscal year during a budget meeting. Or, you can run a PowerPoint Slide Show in **Office Mode** (Windows only) and annotations can be added to each slide and saved in the native file.

Building the Presentation File

You can build your presentation file during your presentation, or you can pre-build it, including the screen captures, images, graphs and text pages you want to present. However you choose to do it, the process is the same. To capture a screen or window, click on the **Mouse Mode** tool with your Interactive Pen and arrange the desktop for capture. Select an Annotation Tool, the **Pen**, for example, indicate your capture preference (by clicking on either the **Partial**, **Window**, or **Screen** option in the dialog), and annotate the captured image. Use the **Page Creation Tools** to add a blank, gridded, or background image page. By default, Interwrite Workspace is in Autosave mode, so your annotated pages are automatically saved as you build your presentation file. Click on the **Save** tool to save the file using the default filename (today's date), or a name you type on the pop-up Onscreen Keyboard.



Distributing Presentation Files

The Interwrite Workspace presentation files you create can be printed for local distribution, or emailed to anyone, anywhere.

Use the **Page Sorter** tool to review the presentation file. The pages in the presentation file can be sorted, moved, duplicated, merged, and deleted using the Page Sorter tool. When the file pages have been arranged to your satisfaction, you can use Page Sorter's export option to export it to one of a number of file formats, or you can close Page Sorter and select an option from the Workspace File Menu.

The native file format of saved presentation files has the *.GWB* extension. *GWB* files can be read on any computer on which Interwrite Workspace is installed. For general distribution, we recommend exporting the presentation file to the *PDF* format using the Export PDF File tool located in the Toolbox, or by selecting the the Export PDF File option from the Workspace File Menu.

Now everyone can stay in the information loop, whether they were able to attend the presentation or not.

Additional Interwrite Learning Resources

We invite you to visit the Interwrite Learning Web site at

www.InterwriteLearning.com

where we have provided a variety of resources to help make your Interwrite Workspace experience more rewarding. We especially encourage you to visit

www.InterwriteLearning.com/support_interwrite.htm

and

www.InterwriteLearning.com/erc/index.htm.

What is PRS?

Interwrite PRS is an Audience Response System—a comprehensive response system for electronically testing, polling, and surveying a group of people. It can be used in conjunction with Interwrite Workspace to take a survey of the audience response to the presentation, or to test the level of comprehension after a lesson presentation, for example. Learn more about PRS by visiting our Web site.

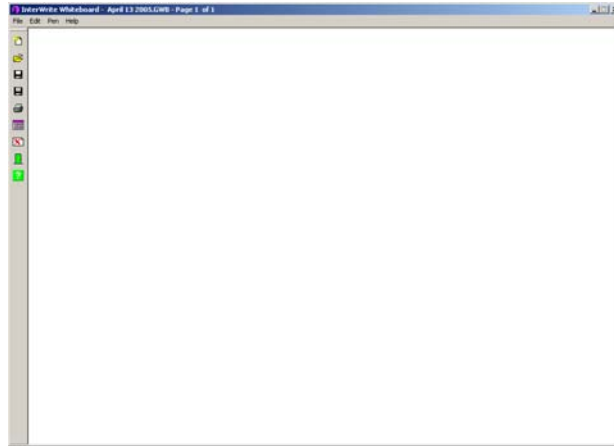
Whiteboard Mode

Whiteboard Mode allows you to capture notes, drawings, calculations—whatever you write on your Interwrite Board with an Interwrite Marker Pen—for distribution. Whiteboard Mode requires only a computer, your Interwrite Board, and one or more Interwrite Marker Pens. When you select Whiteboard

Mode, a blank white screen, representing the Interwrite Board, appears on your computer monitor.

As you write on the Interwrite Board with one of the uncapped Interwrite Marker Pens, whatever you write appears on the computer screen in the color of the

Marker Pen. Whenever you change Pens, the new pen color is displayed on the computer screen.



The process for capturing what you have written on the Interwrite Board is quite simple. Using a *capped* Marker Pen, click on the **Whiteboard Mode** icon on one of the Interwrite Board Features Menus to initiate *Whiteboard Mode*. Uncap each Marker Pen as you use it on the Interwrite Board surface, being sure to recap it snugly to keep it from drying out when you switch to another Marker Pen. When you have finished one screen's-worth, click the *capped* pen on the **Save** icon. Then, click twice on the **Clear** icon. The electronic image of the Interwrite Board on your computer will be blank. Erase the dry-erase ink from the Interwrite Board surface, and you are ready to continue on a new page in the presentation file. Unless you give the file a name, it is saved using today's date as the name.

You can use the **Page Sorter** tool, described on the previous page, to prepare the presentation files created in Whiteboard Mode for distribution.

Interwrite Accessories

BTCOM2 Communications Kit

The BTCOM2 Communications Kit outfits your Interwrite system for Bluetooth® wireless communication. The BTCOM2 Module is connected to your Interwrite Board and the Bluetooth USB Adapter is installed on your computer. The Bluetooth module is built into the Interwrite Pads. Wireless communication between your Interwrite Devices and your computer gives you more flexibility in setting up your classroom when the Interwrite Board and computer do not have to be cabled together.



The Interwrite™ Pad

Interwrite Pads add another dimension to your Interwrite interactive experience. They can be used from anywhere in the room, allowing students to participate in the presentation and instructors to control the presentation. All the interactive functions you can perform at the Interwrite Board can be done using an Interwrite Pad.

The Rechargeable Interactive Pen and Pen Charging Station

The optional Pen Charging Station is designed to attach to the frame of the Interwrite Board just above the controller housing, so it can plug into the Power Connector on the top of the controller. It can also be hung on the wall, using the Wall Mount Hangers shown below.

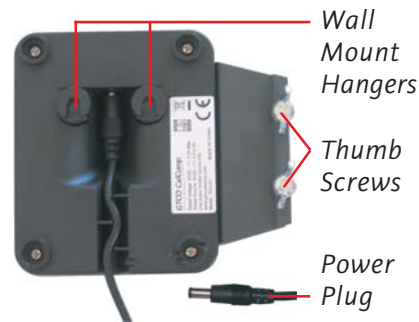
Note

Your Pen Charging Station can be ordered with a Power Cord if you don't want to connect it to the Interwrite Board and have it powered by the board's power supply.

When the Pen Charging Station is plugged into either the wall socket or the Interwrite Board (which must be powered on), snap each of your rechargeable Interactive Pens into a slot to charge them. It's a good idea to keep the Pens in the Charger when they are not being used. It's the ideal place to store them, and you don't have to worry about overcharging them. They will not charge beyond their capacity.

Installing the Pen Charging Station

- 1 Unscrew the **Thumb Screws** and position the Pen Charging Station on the Interwrite Board frame.
- 2 Tighten the Thumb Screws to lock the Pen Charging Station into place.
- 3 Plug the **Power Plug** into the Power Connector on the top of the board's Controller.



When the Pen Charging Station is plugged into the Interwrite Board, it will have power as long as the Interwrite Board is powered by the power supply.

Positioning the Pens in the Pen Charging Station

- 1 Each Pen snaps into one of the charging slots.
- 2 Position the Pen so that the Pen Tether Loop is pointing out, away from the charging slot.
- 3 The **LED Light** below each slot turns on when the Pen is positioned in the slot. The light stays on while the Pen is charging and turns off when the Pen is fully charged. Periodically, the Pen will slowly draw current to maintain a full charge. This is known as *trickle charging* and, when the Pen is trickle charging, the light remains off. The rechargeable Interactive Pen will not over-charge.





Using the Rechargeable Interactive Pen

The rechargeable Interactive Pen is used to write and draw in Interactive Mode and functions as a mouse. It requires no assembly. You can attach a tether to the Pen, if desired. We recommend placing the rechargeable Interactive Pen in one of the Pen Slots on the Pen Charging Station when it is not being used. The photo below identifies the parts of the rechargeable Interactive Pen and describes their function.

The Pen Tip is used to apply virtual ink to the page in the Annotation Window. To use the Pen Tip as an eraser on-the-fly, without selecting the Eraser tool, hold down the left mouse button and touch the pen to the Interwrite Board's surface. On the Mac, with the Pen Tip on the board's surface, press the left button and hold it while erasing.

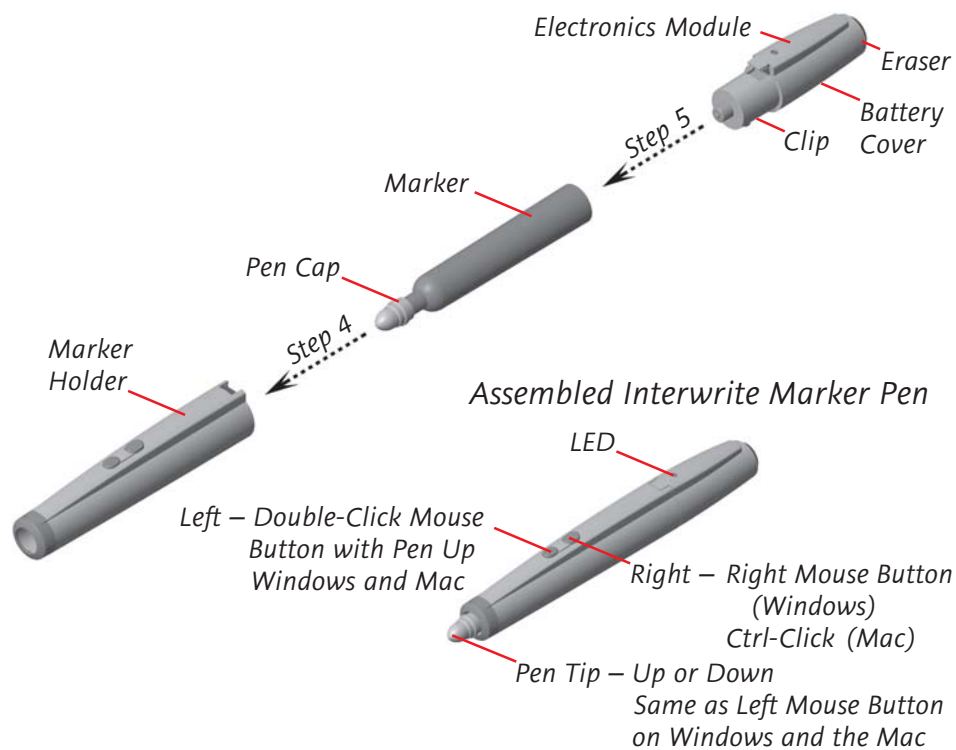


Note

The rechargeable Interactive Pen goes into **Sleep Mode** after about two minutes of inactivity to conserve power. Stash the Pen in a slot in the Pen Charging Station when it is not being used.

Assembling the Interwrite Marker Pen

The electronic Interwrite Marker Pen can be used in both Interactive Mode and Whiteboard Mode. It is used *uncapped* in Whiteboard Mode to apply dry-erase ink on the Interwrite Board. Whatever you write or draw with the uncapped Marker Pen is mirrored on the computer screen. The capped Marker Pen is used in Interactive Mode to apply virtual ink, in the same way the Interactive Pen does. The small felt eraser on the end of the Marker Pen will erase both the real dry-erase ink and virtual ink. Replacement erasers and Pen Caps are included in the Accessory Kit.



- 1 Locate the pen components shown here. Separate the **Marker Holder** from the **Electronics Module** by depressing the **Clip** on the underside of the Electronics Module and pulling the two apart.
- 2 Remove the **Battery Cover** on the Electronics Module by pushing forward on the thumb grip. Insert the supplied AAA battery into the battery compartment, positioning it properly to ensure the correct polarity. Replace the Battery Cover.
- 3 Remove the **Marker's** colored cap and discard it. Replace it with one of the supplied **Pen Caps**.
- 4 Insert the Marker with the Pen Cap in place into the Marker Holder.

- 5 Snap the Electronics Module into the Marker Holder. The **LED** will flash four times, indicating the pen is active.

The two buttons on the Interwrite Marker Pen function in Windows as left double-click and right-click mouse buttons, and on the Mac as left double-click and Ctrl-click mouse buttons. The capped Pen Tip acts as a left-click mouse button when Interwrite Workspace is in Mouse Mode.

In both Windows and on the Mac, the left mouse button on the Marker Pen has the same *chorded* function, described on the previous page, as the Interactive Pens have when Interwrite Workspace is in Annotation Mode. It will erase the virtual ink on the projected image on-the-fly without having to select the Eraser tool.



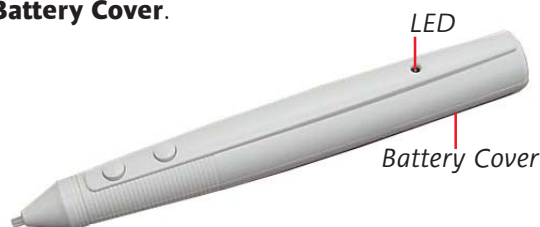
The Interwrite Marker Pen goes into Sleep Mode after 10 seconds of inactivity. The LED will flash continuously when the battery needs to be replaced.

Keep the Marker capped as much as possible to prevent it from drying out. The Pen Cap enables the Marker Pen to be used in Interactive Mode to annotate a projected image on the Interwrite Board without actually applying real ink to the board.

The Interwrite Interactive Pen

The Interwrite Interactive Pen is used exclusively in Interactive Mode. Its buttons and Pen Tip work the same as those on the rechargeable Interactive Pen and the Marker Pen. Following are the instructions for installing or replacing the battery.

- 1 Push in the clip on the battery cover to remove it.
- 2 Insert the supplied AAA battery into the battery compartment, positioning it properly for the correct polarity. As soon as the battery makes a connection, the **LED** will flash four times, indicating the pen is active.
- 3 Replace the **Battery Cover**.

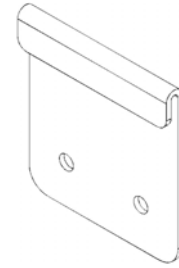


Note

The Interactive Pen goes into *Sleep Mode* after about 10 seconds of inactivity to conserve power. The LED will flash continuously when the battery needs to be replaced.

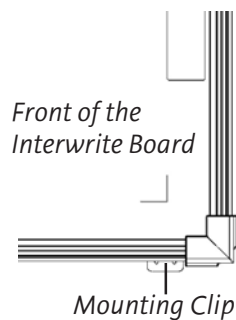
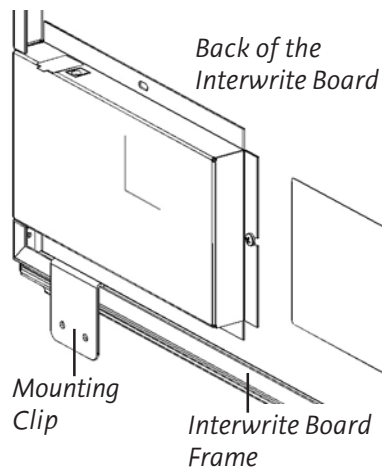
Installing the Mounting Clips on the Whiteboard and Wall

The two Mounting Clips, found in the Accessory Kit that shipped with your Interwrite Board, can be used in conjunction with a wall mount installation of the board. They fasten the bottom of the Interwrite Board to the wall to prevent it from being jostled loose from the Wall Mounting Bracket. Install the Mounting Clips after the Interwrite Board is hung from the Wall Mounting Bracket. The hardware for attaching the Mounting Clips to the wall is not included, as the type of wall on which they will be mounted varies from installation to installation.



Note

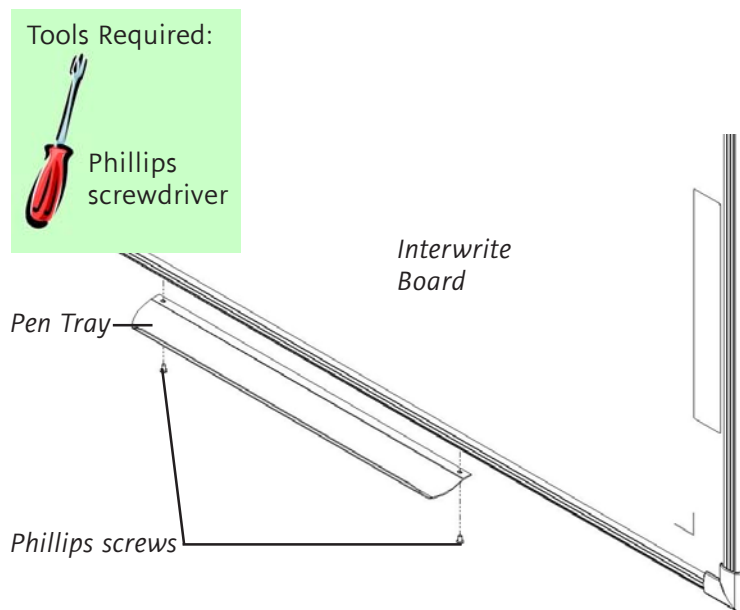
If you are using a ceiling mount projector, be sure the Interwrite Board is aligned to the projector image *before* you install the Mounting Clips to avoid having to reposition the board.



- 1** Hook the Mounting Clip over the lip of the Interwrite Board frame on the back of the board. Position a Mounting Clip in each corner at the bottom of the board.
- 2** Mark the location of the holes in each Mounting Clip on the wall.
- 3** Install suitable anchors into the wall.
- 4** Install screws to secure the Mounting Clips to the wall. Use two screws per Clip. The recommended screw size is number 8 or M4.

Attaching the Pen Tray to the Interwrite Board

If your Interwrite Board is going to be mounted on the wall, attach the optional Pen Tray before you mount the board. If the Interwrite Board is going to be mounted on a floor stand, the Pen Tray can be easily attached at any time. The Interwrite Board Pen Tray attaches to the frame. Use one of the provided Phillips screws for each attachment hole in the Pen Tray.



- 1 Locate the predrilled screw holes for the Pen Tray in the frame of the Interwrite Board.
- 2 Attach the Pen Tray to the Interwrite Board using the small Phillips screws provided, one for each hole in the Pen Tray.
- 3 Slide the rubber bumpers, if they came with your Pen Tray, onto each end, fitting the contours of the bumper to those on the tray.

Note

To avoid damage to the Interwrite Board controller located on the back of the board near the corner, do not rest the Interwrite Board on the controller housing. When handling and maneuvering your Interwrite Board, be careful not to scratch or damage the Interwrite Board's writing surface.

Never nail or drill the Interwrite Board. Doing so will damage the unit and void your warranty.

The Interwrite Board Floor Stand



If your Interwrite Board is shared, the Floor Stand gives your Interwrite Board the mobility necessary to move it easily from room to room. The Floor Stands are model-specific, so be sure to specify your Interwrite Board model number when ordering your Floor Stand.

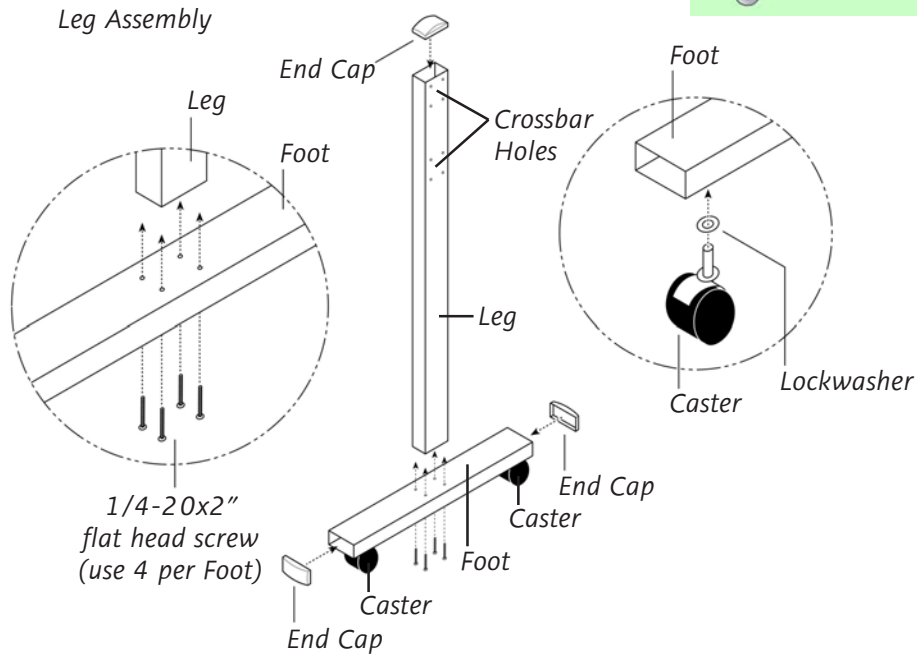
The Floor Stand Accessory Shelf

The Floor Stand Accessory Shelf provides convenient storage space for the equipment that moves with the Interwrite Board. The Accessory Shelf comes in black or gray.



Assembling the Floor Stand

Tools Required:



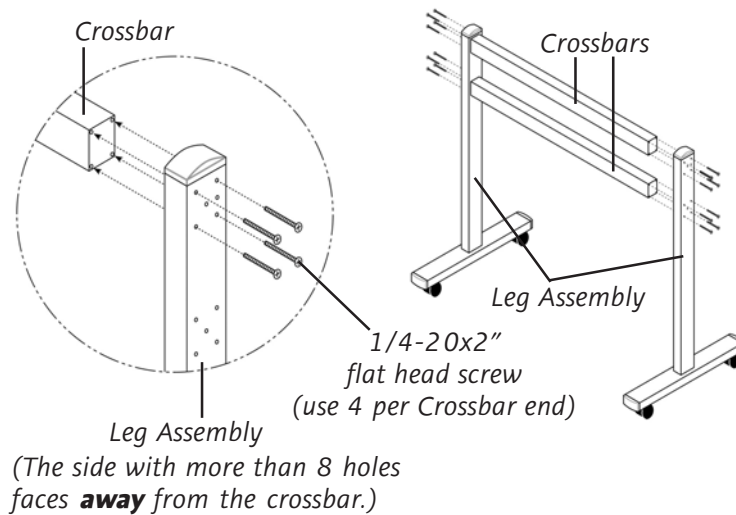
Assembling the Legs

- 1 Using four of the supplied flat head screws, attach a **Foot** to the bottom end—the end *without* the **Crossbar Holes**—of one of the **Legs**.
- 2 Place a **Lockwasher** over the **Caster screw** and screw the Caster into the hole on the underside of the Foot – one at each end. Tighten with the wrench.
- 3 If they are not already in place, insert three **End Caps** (two on each end of the Foot and one at the top of the Leg).
- 4 Repeat Steps 1 through 3 for the other Foot and Leg.

Note

Examine the assembled **Floor Stand Legs**. One side of each **Leg assembly** has **8 holes (2 groups of 4)**, and the other side has **more than 8 holes**. In this step, the sides with just the **8 holes** must face **inward toward the Crossbars**.

Attaching the Crossbars to the Leg Assemblies



- 5 Attach both **Crossbars** to one **Leg assembly** using 8 of the supplied **flat head screws** – 4 screws for each Crossbar. The screws will slide through the 4 outermost holes in each group of holes on the Leg assembly. Attach the other Leg assembly to the Crossbars in the same way.

Regulatory Statements

These devices comply with part 15 of the FCC Rules. Operation is subject to the following two conditions:

- 1 These devices may not cause harmful interference, and
- 2 These devices must accept any interference received, including interference that may cause undesired operation.

Note: This equipment has been tested and found to comply with the limits of a Class A digital device, pursuant to Part 15 of the FCC rules.

These limits are designed to provide reasonable protection against harmful interference in a residential installation. This equipment generates, uses and can radiate radio frequency energy and, if not installed and used in accordance with the instructions, may cause harmful interference to radio communications. However, there is no guarantee the interference will not occur in a particular installation.

If this equipment does cause harmful interference to radio or television reception, which can be determined by turning the equipment off and on, the user is encouraged to try to correct the interference by one or more of the following measures.

- Reorient or relocate the receiving antenna.
- Increase the separation between the equipment and the receiver.
- Connect the equipment into an outlet on a circuit different from that to which the receiver is connected.
- Consult the dealer or an experienced Radio/TV technician for help.

Each device complies with Part 15 of FCC rules and with RSS-210 of Industry Canada. Operation is subject to the following two conditions: (1) The device may not cause harmful interference, and (2) The device must accept any interference received, including interference that may cause undesired operation.

The radiated output power is far below the FCC Radio Frequency exposure limits. Nevertheless, each of the devices should be used in such a manner that the potential for human contact during normal operation is minimized.

Canada

Industry Canada Class A emission compliance statement. This Class A digital apparatus complies with Canadian ICES-003.

Avis de conformité à la réglementation d'Industrie Canada. Cet appareil numérique de classe A est conforme à la norme NMB-003 du Canada.



Declaration of Conformity

The “CE” mark on this device indicates compliance under the EMC 89//336/EEC Directive.

Declaration of conformity according to ISO/IEC Guide 22 and EN 45014

Manufacturer’s Name: GTCO Corp. (dba Interwrite Learning)

Manufacturer’s Address: 7125 Riverwood Drive
Columbia, MD 21046 U.S.A.

declares, that the product

Product Name: Interwrite Board

Model Numbers: 1060, 1077, 1040, 1071, 1085

Product Options: All

conforms to the following product specifications:

EMC: EN55022:1988+A1:2001+A2:2003-Class A

EN55024:1998+A1;2001+A2:2003

EN 61000-3-2:2000

EN 61000-3-2:1995+A1:2001

EN 61000-4-2:1995+A1:1998+A2002

EN 61000-4-3:2002+A1:2002

EN 61000-4-4:1995+A1:2001+A2:2001

EN 61000-4-5:1994+A1:2001

EN 61000-4-11:1994+A1:2001

ETS 300 683 (1997)

ETS 300 220 (2000-09)

Safety: EN60950-1:2002

RoHS: “-R” labelled products conform to DIRECTIVE
2002/95/EC. These products are RoHS-compliant.

Supplementary Information

The product herewith complies with the requirements of the Low Voltage Directive 73/23/EEC and the EMC Directive 89/336/EEC.

Scottsdale, Arizona, U.S.A.

Location

6-1-2006

Date

Dana Doubrava

Engineering Mgr

European Union Emission Directive

This product is in conformity with the protection requirements of EU Council Directive 89/366/ECC on the approximation of the laws of the Member States relating to electromagnetic compatibility.

This product has been tested and found to comply with the limits for Class A Information Technology Equipment according to CISPR 22/European Standard EN55022. The limits for Class A equipment were derived for typical industrial environments to provide reasonable protection against interference with licensed communication devices.

European Union WEEE Directive

The manufacture of this equipment required the extraction and use of natural resources. It may contain hazardous substances that could impact health and the environment.

- In order to avoid the dissemination of the hazardous substances into the environment and to diminish the pressure on our natural resources, we encourage you to return this product to the appropriate take-back system facility. These facilities reuse or recycle most of the materials in this equipment in a responsible way.
- The crossed-out wheeled bin symbol below invites you to use these take-back systems.
- If you need more information about the collection, reuse and recycling systems in your area, please contact your local or regional waste authority.
- Further information about the responsible end-of-life management of this and other Interwrite Learning products is available on our Web site at **www.InterwriteLearning.com**.



European Contact:

Interwrite Learning
A Division of GTCO CalComp GmbH
European Headquarters
Kreiller Strasse 24
81673 Munich
Germany
Tel: +49 (0) 89 370012-0
Fax: +49 (0) 89 370012-12



Declaration of Conformity

Manufacturer's Name: Lih Rong_Electronics co., LTD
Manufacturer's Address: Hsin Chuang City, Taipei
Taiwan, R.O.C.
Importer's Name: GTCO CalComp GmbH
Importer's Address: Kreillerstrasse 24
Munich 81673 Germany

declares, that the product

Product Name: Bluetooth USB Adapter
Model Number: BTA-6030R

conforms to the following product specifications:

EMC: EN301489-1 v1.5.1(2004-11)
EN301489-17 v1.2.1(2002-08)
ETSI EN 300 328 V1.6.1 (2004-11)

Safety: EN60950-1:2001
IEC60950-1:2001

RoHS: "-R" labelled products conform to DIRECTIVE
2002/95/EC. These products are RoHS-compliant.

following the provisions of Council Directive 89/336/EEC (EMC
Directive) and Council Directive 73/23/EEC (Low Voltage Direc-
tive) where applicable

Place and Date: Taipei, Taiwan 07/17/2007
Authorized Person: Raymond Wang
Title: QC Manager

The BTCOM2 Module, assembled by Interwrite Learning, contains the Bluetooth® Serial Module BISM II, #B02456, FCC ID: PI401B, from Ezurio Ltd. Their Declaration of Conformity is included here. The BTCOM2 Module, USB Adaptor II, and PCMCIA Card II are RoHS-compliant.

EZURIO

Declaration of Conformity

In accordance with Annex IV of the EU directive 1999/5/EC

Notified Body consulted: **Phoenix Test-Lab**
ID-Number of Notified Body: **0700**

declare under our responsibility that the **BISM II Module**
Ezurio Bluetooth USB Adaptor II
Ezurio Bluetooth PC Card II

complies with the appropriate essential requirements of the Article 3 of the R&TTE and the other relevant provisions, when used for its intended purpose.

Health and Safety requirements contained in Article 3 (1) a)

EN 60 950: 1992 Safety of information technology equipment + Amendment A1:1993, Amendment A2:1993, Amendment A3:1995, Amendment A4:1997, Amendment A11:1997

EN 50371: Generic standard to demonstrate the compliance of low-power electronic and electrical apparatus with the basic restrictions related to human exposure to electromagnetic fields (10 MHz - 300 GHz) - General public Protection requirements with respect to electromagnetic compatibility Art.3 (1) b)

EN 301489-17 V1.1.1 (09-2000), Electromagnetic Compatibility and radio spectrum Matters (ERM); Electro Magnetic Compatibility (EMC) standard for radio equipment and services; Part 17: Specific conditions for wideband Hiperlan equipment

Means of the efficient use of the radio frequency spectrum

EN 300328-2 V1.2.1 (11-2001), Radio Equipment and Systems (RES); Wideband transmission systems; Technical characteristics and test conditions for data transmission equipment operating in the 2,4 GHz ISM band and using spread spectrum modulation techniques. Part 2: Harmonized EN covering essential requirements under article 3(2) of the R&TTE directive.

Ezurio Ltd
Unit 2, 126 Colindale Avenue, Colindale
London NW9 5HD, United Kingdom

tel: +44 (0)20 8938 1000
fax: +44 (0)20 8905 8608
www.ezurio.com

Registered in England
No. 5178293



Safety Information

Switch off the Bluetooth device before boarding an aircraft. Make sure it cannot be switched on inadvertently. The operation of wireless appliances in an aircraft is forbidden by many airlines to prevent interference with communications systems. Applications that could result in use on aircraft should carry appropriate warnings.

The Electronic Interwrite Pen

This device complies with Part 15 of FCC rules and with RSS-210 of Industry Canada. Operation is subject to the following two conditions: (1) This device may not cause harmful interference, and (2) This device must accept any interference received, including interference that may cause undesired operation.

The radiated output power is far below the FCC Radio Frequency exposure limits. Nevertheless, this device should be used in such a manner that the potential for human contact during normal operation is minimized.

WARNING: Changes or modifications made to this equipment not expressly approved by Interwrite Learning may void the FCC authorization to operate this equipment.

經型式認證合格之低功率射頻電機，非經許可，公司、商號或使用者均不得擅自變更頻率、加大功率或變更原設計之特性及功能。

低功率射頻電機之使用不得影響飛航安全及干擾合法通信；經發現有干擾現象時，應立即停用，並改善至無干擾時方得繼續使用。前項合法通信，指依電信法規定作業之無線電通信。低功率射頻電機須忍受合法通信或工業、科學及醫療用電波輻射性電機設備之干擾。



International Interwrite Board Warnings

WARNING

- Two people should mount the Interwrite Board on the wall or Floor Stand to avoid injury, or damage to the Interwrite Board.
- One person can adjust the position of the Interwrite Board up or down, but be sure to stabilize the Floor Stand before you attempt to reposition the board. Lock down the thumb tabs on the Casters, or push the Floor Stand against a wall to prevent it from rolling, or put one of your feet on the Floor Stand Foot to hold it in place as you adjust the Interwrite Board's position.
- Position the Interwrite Board Floor Stand on a level surface to avoid tipping.
- Lower the Interwrite Board to the lowest position on the Floor Stand before moving the stand.
- Do not hang objects on the Interwrite Board.

WARNUNG

- Zum Befestigen des Interwrite Board an der Wand oder am Ständer sind zwei Personen erforderlich, um Personenverletzung oder Beschädigungen des Interwrite Board zu vermeiden.
- Die Höhe des Interwrite Board kann auch von einer Person allein verstellt werden, dazu muss jedoch sichergestellt sein, dass der Ständer des Boards sicher steht und nicht umfallen kann. Dazu entweder die Laufrollen arretieren, den Ständer gegen eine Wand rollen oder einen Fuß auf den Ständer stellen, damit das Interwrite Board beim Verstellen der Höhe nicht wegrollen kann.
- Stellen Sie den Interwrite Board-Ständer auf einen ebenen Untergrund, damit er nicht umfallen kann.
- Stellen Sie das Interwrite Board vor dem Transport in die niedrigste Position.
- Hängen Sie keine Gegenstände an das Interwrite Board.

ATTENTION

- Il faut deux personnes pour fixer le tableau blanc sur le mur ou sur le pied de sol afin d'éviter tout endommagement ou blessure.
- Une seule personne peut ajuster la position du tableau blanc (vers le haut ou le bas) mais assurez-vous que le pied de sol est bien stable avant de repositionner le tableau. Abaissez les languettes de verrouillage des roulettes avec le pouce, poussez le pied de sol contre un mur pour



éviter qu'il ne roule ou placez l'un de vos pieds sur le pied de sol pour maintenir celui-ci en place pendant que vous ajustez sa position.

- Positionnez le pied de sol du tableau sur une surface plane afin d'éviter tout basculement.
- Descendez le tableau blanc jusqu'à la position la plus basse du pied de sol avant de le déplacer.

ADVERTENCIA

- Dos son las personas recomendadas para instalar la pizarra en la pared o en la base de pie con el fin de evitar que se produzcan heridas personales o se dañe la pizarra.
- Una persona puede ajustar la posición de la pizarra hacia arriba o hacia abajo pero asegurándose de que la base de pie haya quedado estable antes de intentar colocar el tablero. Fije el bloqueo manual de las ruedecillas o coloque la base de pie contra la pared para evitar que se mueva, también puede poner uno de sus pies en la base para sujetarla cuando ajuste la posición de la pizarra.
- Coloque la base de pie de la pizarra en una superficie nivelada para evitar que vuelque.
- Baje la pizarra hasta la posición más baja de la base de pie antes de trasladar esta última.
- No cuelgue objetos en la pizarra.

AVVERTENZA

- Due persone devono montare la Lavagna sulla parete o su un cavalletto per evitare lesioni o danni alla Lavagna.
- Una persona può regolare la posizione della Lavagna verso l'alto o il basso, ma assicurarsi di stabilizzare il cavalletto prima di tentare di riposizionare la lavagna. Bloccare verso il basso le linguette di bloccaggio sulle rotelle o spingere il cavalletto contro una parete per impedirne il rotolamento, oppure appoggiare il proprio piede sul piede del cavalletto per tenerlo fermo mentre si regola la posizione della Lavagna.
- Posizionare il cavalletto della Lavagna su una superficie piana per evitarne il rovesciamento.
- Abbassare la Lavagna alla posizione più bassa sul cavalletto prima di spostare il supporto.
- Non appendere oggetti sulla Lavagna.

Limited Warranty for the Interwrite Board

Interwrite Learning warrants these products to be free from defects in material and workmanship under the following terms. Complete and return the enclosed warranty registration card to ensure that your products are covered by this warranty.

Coverage

Parts and labor are warranted for three (3) years from the date of the first consumer purchase for the Interwrite Board, controller, electronic Pens, electronic erasers, power supply, cables and accessories. This warranty applies to the **original consumer purchaser only**.

Within the European Union, the warranty period is three (3) years, as mandated by the EU. Contact your local dealer or distributor for additional warranty information.

Warranty is valid only if original consumer's purchase or lease date is less than or equal to six months from the original Interwrite Learning sale date. This information will be captured by the system serial number and confirmed by the reseller's purchase order.

A nominal Warranty Handling Fee will be charged after the first 90 days of use and calculated from the date of original consumer purchase. This payment may be made by Visa, MasterCard, or American Express. A copy of the sales receipt or invoice will be required for warranty verification.

Conditions

Except as specified below, this warranty covers all defects in material or workmanship in the products. The following are not covered by the warranty:

1. Any product on which the serial number has been defaced, modified, or removed (if applicable).
2. Damage, deterioration, or malfunction resulting from:
 - a. Accident, misuse, abuse, neglect, fire, water, lightning, or other acts of nature, unauthorized product modification for any purpose, or failure to follow instructions supplied with the product.
 - b. Repair, or attempted repair, by anyone not authorized by Interwrite Learning.
 - c. Any damage in shipment of the product (claims must be presented to the carrier).
 - d. Any other cause which does not relate to a manufacturing defect.
3. Any product not sold or leased to a consumer within six months of Interwrite Learning's original sale date.
4. Consumable parts, e.g., batteries, dry-erase markers, eraser felt.

Interwrite Learning will pay all labor and material expenses for covered items, but will not pay for the following:

1. Removal or installation charges.
2. Costs for initial technical adjustments (set up), including adjustments of user controls.
3. Certain shipping charges. (Payment of shipping charges is discussed in the next section of this warranty.)
4. Packaging costs. (Customers should keep their boxes.)

Warranty Service Procedures

1. To obtain service on your Interwrite Learning product, contact the Technical Support Department to receive a Return Material Authorization Number (RMA#) and shipping instructions by calling:
 - In United States: (480) 443-2214 (MST)
 - In Europe: +49 (0) 89 370012-0 (CET)
2. Ship the product to Interwrite Learning with the RMA# marked clearly on the outside of the box. Interwrite Learning reserves the right to refuse the shipment, if not properly marked.
3. Although the consumer must pay any shipping charges to ship the product to Interwrite Learning for warranty service, Interwrite Learning will pay the return shipping charges for ground shipment. Other shipping options are available at an additional fee.
4. Whenever warranty service is required, the original dated sales invoice (or a copy) must be presented as proof of warranty coverage, and should be included in shipment of the product. In addition, please include your name, address, telephone number, fax number, email address, and a description of the problem.
5. If Interwrite Learning determines that the unit is not defective within the terms of the warranty, the consumer shall pay the cost of all freight charges, as well as any repair charges.

Technical Support

Web-based Technical Support is available free of charge at: www.interwritelearning.com, where current driver releases, as well as comprehensive technical support, troubleshooting, Technical Bulletins and FAQs can be found.

Telephone Technical Support is available free of charge to the original consumer for a period of 90 days from the date of purchase of the product. Please contact our Technical Support Department:

In United States: (480) 443-2214 (MST)
In Europe: +49 (0) 89 370012-0 (CET)

You can also fax your request to:

In United States: (480) 948-5508 (MST)
In Europe: +49 (0) 89 370012-12 (CET)

Our toll-free number in the U.S. is: 800-856-0732 (MST)

Disclaimer of Unstated Warranties

The warranty printed above is the only warranty applicable to this purchase. ALL OTHER WARRANTIES, EXPRESSED OR IMPLIED, INCLUDING, BUT NOT LIMITED TO, THE IMPLIED WARRANTIES OF MERCHANTABILITY AND FITNESS FOR A PARTICULAR PURPOSE ARE DISCLAIMED. Assuming the warranty above stated is otherwise applicable, it is expressly understood and agreed that Interwrite Learning's sole liability, whether in contract, tort, under any warranty, in negligence, or otherwise, shall be for the repair or replacement of the defective parts, and under no circumstances shall Interwrite Learning be liable for special, indirect, or consequential damages. The price stated and paid for the equipment is a consideration in limiting Interwrite Learning's liability.



Notice

Some states and provinces do not allow the exclusion or limitation of incidental or consequential damages, so the above exclusion may not apply to you. This warranty gives you specific legal rights, and you may have other rights, which vary from state to state, or province to province.

To obtain service on your Interwrite Learning product, call our Technical Support Department at (480) 443-2214 (MST), or fax us at (480) 948-5508 (MST); in Europe call +49 (0) 89 370012-0 (CET), or fax us at +49 (0) 89 370012-12 (CET).

We can also be contacted through our Web site at www.InterwriteLearning.com (in US), at EUOffice@gtcocalcomp.com (in Germany), or at infos@calcomp.fr (in France).

Important! All products returned to Interwrite Learning for service must have prior approval in the form of a Return Merchandise Authorization Number (RMA#), which can be obtained by calling the Technical Support Department.



Corporate Headquarters

7125 Riverwood Drive
Columbia, Maryland 21046
Tel: 410.381.6688
Fax: 410.910.0051
Sales: 866.496.4949

Western Office

8224 East Evans Road
Scottsdale, Arizona 85260
Tel: 480.948.6540
Support: 480.443.2214
Fax: 480.948.5508

European Headquarters

Interwrite Learning
A Division of GTCO CalComp GmbH
Kreiller Strasse 24
81673 Munich
Germany
Tel: + 49 (0) 89 370012-0
Fax: + 49 (0) 89 370012-12

www.InterwriteLearning.com

Support: 480.443.2214



Copyright© 2007 Interwrite Learning™

Interwrite Learning and Interwrite are trademarks of GTCO Corp.
Bluetooth is a trademark of, and is owned by, Bluetooth SIG, Inc., U.S.A.,
and is licensed to Interwrite Learning.

All other products and company names are the trademarks or registered
trademarks of their respective owners.

The information contained in this document is subject to change without notice. Interwrite Learning assumes no responsibility for technical, or editorial errors, or omissions that may appear in this document, or for the use of this material. Nor does Interwrite Learning make any commitment to update the information contained in this document. This document contains proprietary information which is protected by copyright. All rights reserved. No part of this document can be photocopied or reproduced in any form without the prior, written consent of Interwrite Learning.